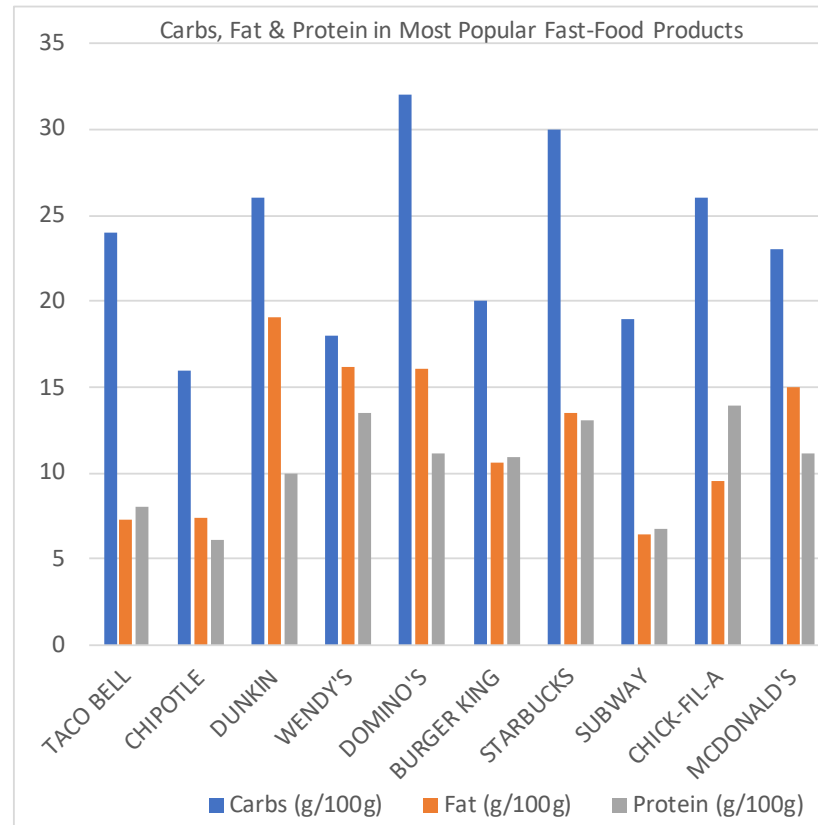
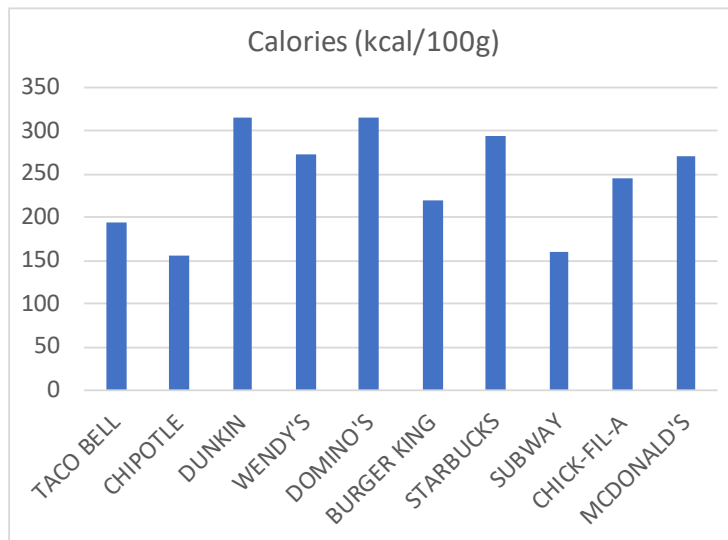


CALORIE RESULTS - with FATS, PROTEIN, CARBS, ETC.

Brand	Product	HRI Sample ID	Calories (kcal/100g)	Ash (g/100g)	Carbs (g/100g)	Fat (g/100g)	Moisture (g/100g)	Protein (g/100g)
TACO BELL	TACO BELL - Beef taco supreme	10963	193	1.31	24	7.32	59.69	8.03
CHIPOTLE	CHIPOTLE - Carnitas bowl with everything	10975	155	0.93	16	7.41	69.71	6.13
DUNKIN	DUNKIN - Breakfast sandwich - sausage, egg and cheese	10983	315	1.15	26	19.02	43.98	9.95
WENDY'S	WENDY'S - Cheese Burger	10990	272	1.97	18	16.20	50.28	13.52
DOMINO'S	DOMINO'S - Pepperoni cheese pizza - extra pepperoni	10993	316	2.02	32	16.03	38.90	11.20
BURGER KING	BURGER KING - Quarter Pounder with lettuce and tomato and cheese	11005	219	1.68	20	10.61	56.71	10.95
STARBUCKS	STARBUCKS - Double-Smoke Bacon, Cheddar and Egg Sandwich	11006	295	1.89	30	13.50	41.23	13.06
SUBWAY	SUBWAY - Cold Cut Combo - Footlong	11007	161	2.12	19	6.44	65.59	6.81
CHICK-FIL-A	CHICK-FIL-A - Chicken sandwich	11010	245	2.25	26	9.54	48.48	13.92
MCDONALD'S	MCDONALD'S - Big Mac - Beef, Lettuce, Pickle, American Cheese	11016	271	1.11	23	14.99	49.90	11.16



Brand	Product Research Statements of Caloric Content from Fast Food Brands	Calories (per se	Total fat (g)	Cholesterol (mg)	Sodium (mg)	Total Carbs (g)	Protein (g)
TACO BELL	TACO BELL - Beef taco supreme	190.00	11.00	25.00	320.00	15.00	8.00
CHIPOTLE	CHIPOTLE - Carnitas bowl with everything	690.00	25.00	105.00	2120.00	77.00	50.00
DUNKIN	DUNKIN - Breakfast sandwich - sausage, egg and cheese	680.00	33.00	215.00	1490.00	68.00	27.00
WENDY'S	WENDY'S - Cheese Burger	522.00	27.00	90.00	1123.00	34.00	35.00
DOMINO'S	DOMINO'S - Pepperoni cheese pizza - extra pepperoni	NA					
BURGER KING	BURGER KING - Quarter Pounder with lettuce and tomato and cheese	NA					
STARBUCKS	STARBUCKS - Double-Smoke Bacon, Cheddar and Egg Sandwich	500.00	27.00	225.00	960.00	43.00	21.00
SUBWAY	SUBWAY - Cold Cut Combo - Footlong	1070.00	59.00	157.00	3224.00	88.00	47.00
CHICK-FIL-A	CHICK-FIL-A - Chicken sandwich	420.00	18.00			41.00	29.00
MCDONALD'S	MCDONALD'S - Big Mac - Beef, Lettuce, Pickle, American Cheese	590.00	34.00	85.00	1050.00	46.00	25.00

Brand	Product Testing Results	HRI Sample ID	Calories (kcal/100g)	Fat (g/100g)	Ash (g/100g)	Moisture (g/100g)	Carbs (g/100g)	Protein (g/100g)
TACO BELL	TACO BELL - Beef taco supreme	10963	193	7.32	1.31	59.69	24	8.03
CHIPOTLE	CHIPOTLE - Carnitas bowl with everything	10975	155	7.41	0.93	69.71	16	6.13
DUNKIN	DUNKIN - Breakfast sandwich - sausage, egg and cheese	10983	315	19.02	1.15	43.98	26	9.95
WENDY'S	WENDY'S - Cheese Burger	10990	272	16.20	1.97	50.28	18	13.52
DOMINO'S	DOMINO'S - Pepperoni cheese pizza - extra pepperoni	10993	316	16.03	2.02	38.90	32	11.20
BURGER KING	BURGER KING - Quarter Pounder with lettuce and tomato and	11005	219	10.61	1.68	56.71	20	10.95
STARBUCKS	STARBUCKS - Double-Smoke Bacon, Cheddar and Egg Sandwich	11006	295	13.50	1.89	41.23	30	13.06
SUBWAY	SUBWAY - Cold Cut Combo - Footlong	11007	161	6.44	2.12	65.59	19	6.81
CHICK-FIL-A	CHICK-FIL-A - Chicken sandwich	11010	245	9.54	2.25	48.48	26	13.92
MCDONALD'S	MCDONALD'S - Big Mac - Beef, Lettuce, Pickle, American Cheese	11016	271	14.99	1.11	49.90	23	11.16

TACO BELL	https://www.carbmanager.com/food-detail/cc:f56afe3102eec321f016ffbfd554890/taco-bell-beef-soft-taco-supreme
CHIPOTLE	https://www.mynetdiary.com/food/calories-in-carnitas-bowl-by-chipotle-serving-27683617-0.html
DUNKIN	https://www.carbmanager.com/food-detail/md:7c7d82ee23449b3718d18b5a44b86e92/breakfast-sandwiches-sausage-egg-cheese-on-a-plain-bagel#:~:text=A%20Plain%20Bagel-Dunkin%2
WENDY'S	https://www.nutritionvalue.org/WENDY%27S%2C_with_cheese%2C_CLASSIC_SINGLE_Hamburger_nutritional_value.html
DOMINO'S	no info found for pepperoni cheese pizza with extra pepperoni
BURGER KING	no info found for quarter pounder with lettuce, tomato and cheese
STARBUCKS	https://www.starbucks.com/menu/product/2121219/single/nutrition
SUBWAY	https://www.nutritionix.com/i/nutritionix/subway-cold-cut-combo-1-footlong/56f8e250a43e13d4214c94e5
CHICK-FIL-A	https://www.chick-fil-a.com/catering/chick-fil-a-chicken-sandwich
MCDONALD'S	https://www.mcdonalds.com/us/en-us/product/big-mac.html#accordion-c921f9207b-item-842cb18782



505 Dimick Drive
 Suite 111
 Fairfield, IA 52556
 Ph: +1 (641) 552-6258
labmanager@hrlabs.org

Fast Food Meal Testing Results	Sample weight: Ounces per serving	in Milligrams	Test Results: Calories per 100 grams	Miligrams divided by 100	Company Claims of Caloric Content	Calories per serving BOLD are over brand claims
TACO BELL - Beef taco supreme	5.3	150.3	193	1.50	190.00	289.99
CHIPOTLE - Carnitas bowl with everything	35	992.2	155	9.92	690.00	1537.96
DUNKIN - Breakfast sandwich - sausage, egg and cheese	8	226.8	315	2.27	680.00	714.41
WENDY'S - Cheese Burger	7.6	215.5	272	2.15	522.00	586.04
DOMINO'S - Pepperoni cheese pizza - extra pepperoni	14.4	408.2	316	4.08	NA	1290.02
BURGER KING - Quarter Pounder with lettuce and tomato and cheese	8	226.8	219	2.27	NA	496.68
STARBUCKS - Double-Smoke Bacon, Cheddar and Egg Sandwich	5.33	151.1	295	1.51	500.00	445.75
SUBWAY - Cold Cut Combo - Footlong	16	453.6	161	4.54	1070.00	730.28
CHICK-FIL-A - Chicken sandwich	6.33	179.5	245	1.79	420.00	439.66
MCDONALD'S - Big Mac - Beef, Lettuce, Pickle, American Cheese	7.6	215.5	271	2.15	590.00	583.89